

## White Oak



Solid and hard, the wood grain is straight with a unique presence. Due to its unique fiber structure, when lumbered with a straight grain, a shining silver grain similar to the stripes on the back of a tiger, known as tiger stripes, appears, giving it a unique look. Hida Sangyo mainly uses North American white oak that is around 100 years old. \*Oak wood may be used for some parts such as curved wood parts.



WO  
polyurethane finish

OU  
polyurethane finish

N5  
polyurethane finish

C4  
polyurethane finish



DU  
polyurethane finish

UW  
polyurethane finish

BK  
polyurethane finish

OF  
oil finish

## Beech



The wood grain is fine, hard and resistant to impact, so it is useful as a furniture material. It is also sticky and resistant to cracking, making it suitable for bentwood processing. Hida Sangyo mainly uses European beech wood.

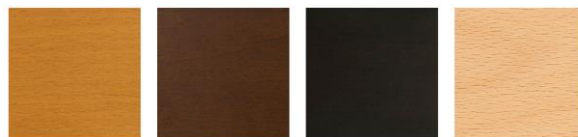


NY  
polyurethane finish

WO  
polyurethane finish

OU  
polyurethane finish

N5  
polyurethane finish



C4  
polyurethane finish

UW  
polyurethane finish

BK  
polyurethane finish

ON  
oil finish

## Walnut



Walnut is one of the world's three major woods along with teak and mahogany. It is a high-class material with a subdued color and a beautiful heathered grain with a profound feeling. Because it contains a lot of tannin, it will be polished and the texture will deepen as you use it. Hida Sangyo uses black walnut wood from North America.



WA  
polyurethane finish

GW  
polyurethane finish



B Rank Washable

It can be washed at home.



SROR



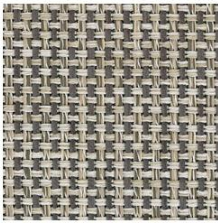
SRBR



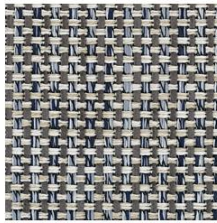
SRLG



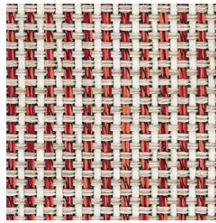
SRDR



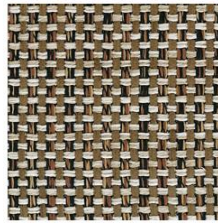
SA95



SA98



SA15



SA85



SPG



SPLG



SIV



SBE



SLBU



SBU



SPU



SDBR



DCRE



DCYG



DCPU



DCBR



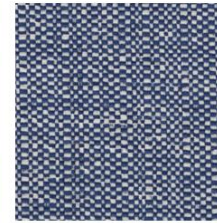
DCB



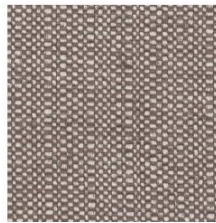
PHRE



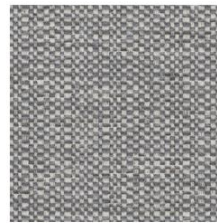
PHYE



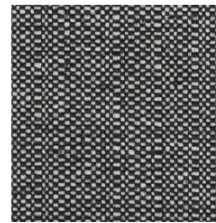
PHBU



PHDR



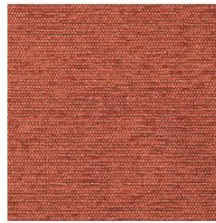
PHGR



PHB



MIBE



MIRE



MIG



MIBR



RCBE



RCOR



RCYG



RCPU



RCBR



B Rank Dry

This fabric will need to be professionally cleaned.



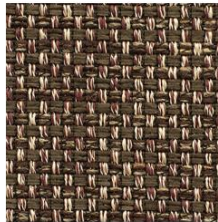
GRGR



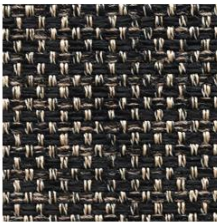
CRBE



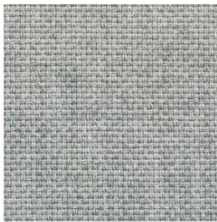
CRNV



CRBR



CRB



PTGY



PTLB



PTDR

B Rank Synthetic leather



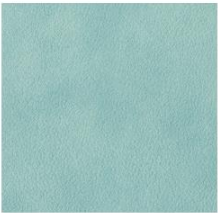
HILBE



HILGR



HIP



HILBU



HIBU



HICA



HIBR



HIDBR



HIB

C Rank

Highly functional fabric.



GCLGR



GCGR



GCBR



SP10



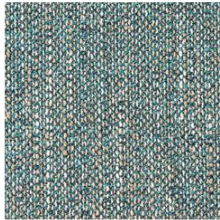
BMG



BGRE



BGGR



BGG



SP19



SP08



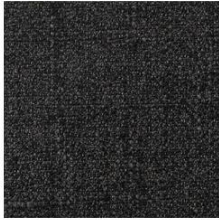
SP13



SP17



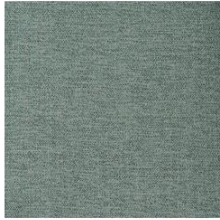
BGDG



BGB



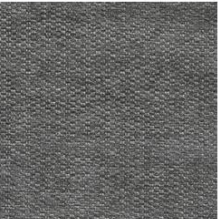
LSBE



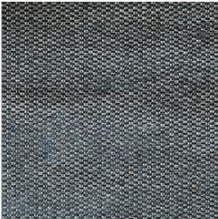
LSG



DLLG



DLGR



DLDB



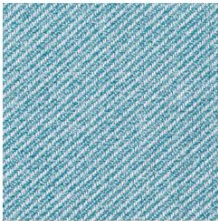
NADB



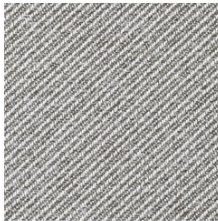
LSPU



NADG



NHBU



NHBR



BMBU



E Rank

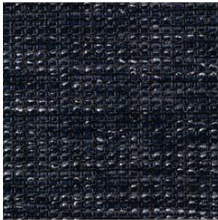
Fabric with great texture and an attractive expression.



ALBE



ALLG



ALDB



KTBU



HUNV



HUGR



HMBE



HMGR



KTDG



KMBE



KMG



JPBE



MMBE



MMYE



MMG



JPDB



TSBE



TSBR



TSLGR



TSB



TBE



TYE



TGR

Genuine Leather A



NEW SOFT054      NEW SOFT078      NEW SOFT041      NEW SOFT038



NEW SOFT030      NEW SOFT048      NEW SOFT058      NEW SOFT035



NEW SOFT036      NEW SOFT013

Genuine Leather B



NEW SMOOTH611      NEW SMOOTH687      NEW SMOOTH673      NEW SMOOTH672



NEW SMOOTH635      NEW SMOOTH636      NEW SMOOTH685      NEW SMOOTH613

Genuine Leather D



SN05



SN06



SN07



SN08



RIN102



RIN106



RIN108



RIN109